

CRABS & CRUSTACEANS

ALASKAN KING CRAB LEGS

600g - 64.9

200g - 21.9

best served chilled

MUD CRAB (QLD)

market price

best served Singapore chilli

CHILLED
in the shell
with mayonnaise

SINGAPORE CHILLI
wok fried with a hot sticky tomato,
black bean & chilli sauce

SALT & PEPPER
crusted with salt,
szechuan pepper, lime

SALT & SZECHUAN PEPPER QLD KING PRAWNS

lime aioli

34.9

RAW THINGS

BROADWATER ROCK OYSTERS

natural

kilpatrick

chilli-coriander

1/2 DOZ 19.9

DOZ 37.9

SALMON SASHIMI 19.9

daikon, edamame & wasabi dressing

STEAK TARTARE 19.9

truffle aioli, sourdough crostini

ENTREES

BABY OCTOPUS 18.9
chilli, salt & pepper

1/2 DOZEN GARLIC BUTTER PRAWNS 21.9
gremolata herbs

CHARCUTERIE PLATE 22.5
jamon iberico, nduja salami, duckliver parfait

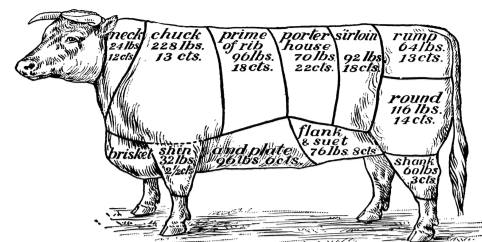
SPRING BAY MUSSELS MARINERE 16.9
garlic, chilli, white wine, cream

DRESSED KING CRAB 21.9
citrus, avocado & brioche

BURRATA MOZZARELLA SALAD 21.9
tuscan flat bread, tomato, basil, olives

BERMAGUI WILD KINGFISH CEVICHE 16.9
salt & pepper yabbie, chilli, lime, coriander

WARM QUAIL SALAD 12.9
raddichio, speck & vincotto



KINGSLEYS BURGER 20.9
grain fed beef, bacon, cheddar, rocket & beetroot relish with chips

ANGUS FLAT IRON 250g 26.9
pasture fed, O'Connor, onion rings, chimichurri

AGED RUMP 300g 29.9
120 day grain fed, Riverine Premium Beef™ marble score 2+

STRIPLOIN (NEW YORK) 300g 36.9
120 day grain fed, Riverine Premium Beef™, marble score 2+

EYE FILLET 200g 37.9
pasture fed, Grasslands, marble score 2+

RIB-EYE (SCOTCH FILLET) 350g 39.9
120 day grain fed, Riverine Premium Beef™, marble score 2+

RIB ON THE BONE 400g 40.9
pasture fed, Grasslands, marble score 2+

WAGYU RIB ON THE BONE 800g 134.9
500 day grain fed, defatted, Tajima™, marble score 6+
subject to availability

ANGUS EYE FILLET 300g 46.9
150 day grain fed, Gippsland Victoria

T-BONE 500g 41.9
120 day grain fed, Riverine Premium Beef™, marble score 2+

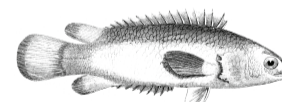
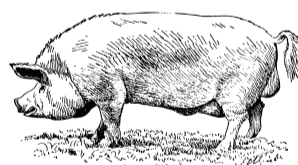
WAGYU SIRLOIN 300g 49.9
400 days grain-fed, F1, Darling Downs, marble score 4+

RIB ON THE BONE 650g 56.9
120 day grain fed, Riverine Premium Beef™, marble score 2+

200g EYE FILLET 45.9
with soft shell crab

350g RIB-EYE 48.9
with Mooloolaba prawns

WITH ROAST BONE MARROW 7.9



ROAST CONE BAY BARRAMUNDI 32.9
broccoli, baby capers, chilli

LINE CAUGHT BERMAGUI FISH market price
please ask waiter

THIRLMERE FARM BABY CHICKEN 26.9
cabbage slaw, charred meyer lemon

JUNEE GOLD LAMB SHOULDER & CUTLET 36.9
cannelini beans, silverbeet

FROM THE MARKET

ROAST CHILLI BEETROOT, LEBNA, SPRING ONIONS 8.9

CREAMED SPINACH & SILVERBEET 8.9

STEAMED BROCCOLI 8.9

GREEN BEANS, ALMONDS 8.9

STEAKHOUSE CHIPS 7.9

MASHED DESIREE POTATO 7.9

KIPFLERS, SPINACH & CHORIZO 10.9

POTATO GRATIN 8.9

YOUNG GREENS, WALNUT, SHIRAZ DRESSING 7.9

RADDICHIO, WITLOF, ORANGE & BALSAMIC 8.9

CAESAR SALAD, ANCHOVY, SOURDOUGH CROUTONS 10.9

ICEBERG SALAD, RADISH & BLUE CHEESE 12.9

CONDIMENTS & SAUCES

2.9

TOMATO-CHILLI JAM.... HABANERO RELISH.... BEARNAISE.... GREEN PEPPERCORN.... CHIMICHURRI...GARLIC BUTTER....